

Pathways to the Professions





Introduction to Aston University and our pathway programmes

Founded in 1895 and a university since 1966, Aston University is a long-established research-led university known for its world-class teaching quality and strong links to the professions. With over 17,500 students from more than 120 countries, at Aston University, we are proud to be inclusive.

Aston University was ranked second in the country for making a significant contribution to social mobility for the third year running (Higher Education Policy Institute, 2022). We believe that all students with the ambition and desire to study at university should be able to do so, regardless of their background or personal circumstances. Our Pathway to the Professions programmes support eligible students to do just that.

Designed to expand knowledge and develop skills, our innovate Pathways to the Professions programmes give insight into what university life is really like for those students with ambitions to study Medicine, Healthcare, Engineering and Technology (STEM) for university. During the programme, which students will complete alongside their year 12 studies, successful applicants will be given the opportunity to take part in various enrichment activities to help support their journeys into Higher Education. Activities vary from stream to stream, but can include subject specific taster days, academic tutoring delivered by current Aston University undergraduates, UCAS Application support and a Summer School.

These sustained programmes of activity aim to raise students' aspirations, improve their motivation to progress onto Higher Education and provide them with the knowledge, skills and experiences that will enhance their UCAS applications. During their time on the programme, students will be exposed to a range of leading experts from Aston University and key professionals from within their streams corresponding sector. Students will also get the opportunity to meet current Aston University students and ask them about their Higher Education experiences to help them make informed decisions about their futures.

Contents

- 3 Introduction to Aston University and our pathway programmes
- 5 Who are the pathways for?
- 6 Wesleyan Pathway to Medicine
- 8 Wesleyan Pathway to Healthcare
- 10 The Royce Hornby Pathway to Engineering and Technology (STEM)
- 12 Frequently asked questions
- 15 Get in touch



Who are the pathways for?

Places on our Pathways to the Professions programmes are open to students entering Year 12 in September, who have the potential to enter Higher Education, and are considering a degree in either Medicine, Healthcare or Engineering and Technology (STEM). Students who are interested in applying must meet the academic and widening participation criteria for their stream as listed on our [website](#) and the entry requirements for their subject(s) of interest on our [website](#). Please note, places on the programmes are limited. If oversubscribed, places will be offered by random allocation to all eligible applicants until the programme is full.

Please note, students who enter the Pathways to the Professions programmes are not guaranteed a place on Aston University degree programmes. On successful completion of the programme, students who fulfil our admissions entry criteria, apply to Aston University, and are successful with their application, will be eligible for a [Pathway Contextual Offer](#).



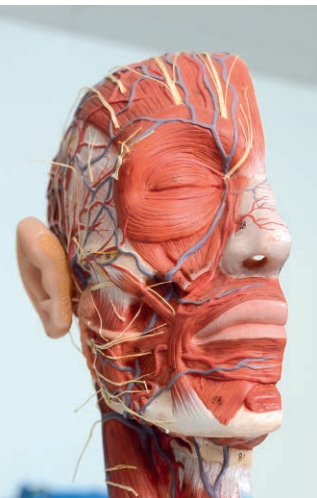


The [Wesleyan](#) Pathway to Medicine programme has been designed to **expand knowledge, develop skills, and give an insight into what university life is really like to those students with ambitions to study medicine for university.**

During the programme, which students will complete alongside their Year 12 studies, successful applicants will be given the opportunity to take part in various enrichment activities. These include medicine and healthcare subject taster days and an A level revision boot camp. In addition, science academic tutoring and specialist UCAS and Work Experience preparation workshops help to prepare students for their applications to medicine and competitive healthcare courses.

During their time on the programme, students will be exposed to a range of leading experts from healthcare subjects taught at Aston University including medicine, pharmacy, optometry, psychology, audiology, and biosciences. Students will also hear from practicing healthcare professionals from across the region such as GPs, nurses, paramedics, pharmacists, and optometrists, as well as meeting current Aston University healthcare students.

Learners will be expected to attend all compulsory Year 12 events to be eligible for a Pathway Contextual Offer if they apply to Aston University on our undergraduate Medicine and Health and Life sciences degrees.



Key Dates

Students must have support from their teachers and careers advisers to apply, including approval for time off school/college where necessary to attend events.

Autumn Term

- > Student and Parent Launch
- > Medicine and Healthcare Taster Days

Spring Term

- > Revision Boot Camp
- > Optional Academic Tutoring in either Biology, Chemistry or Maths A Level
- > UCAS Application and Work Experience Preparation Day

Summer Term

- > Study Skills and Revision Techniques Module
- > Summer School (including programme graduation)

Who is eligible for the Wesleyan Pathway to Medicine?

The Wesleyan Pathway to Medicine is open to students entering Year 12 in September who have a genuine interest in pursuing a career in medicine or healthcare. Students who are interested in applying to the Pathway to Medicine programme must meet the academic and widening participation criteria to apply. Please see the website for details.

Why Choose the Wesleyan Pathway to Medicine

- > Access to a wide range of medicine and healthcare experts to help you decide on your future career path.
- > A level boot camps, science academic tutoring and application preparation to ensure you are fully prepared to apply to university.
- > A single point of contact at Aston University who will support you throughout the university application process and your time at school or college.
- > Eligible for a Pathway Contextual offer if your application to Aston University is successful.



The Pathway to Medicine has given me an insight into what university is really like and helped build my confidence about my own journey into higher education – it was a real eye-opener”.

Former Pathway to Medicine student



Wesleyan Pathway to Healthcare

www.wesleyan.co.uk

WESLEYAN
we are all about you



Our [Wesleyan](#) Pathway to Healthcare programme has been designed to **expand knowledge, develop skills, and give an insight into what university life is really like to those students with ambitions to study healthcare courses for university. Please note, this does not include Medicine.**

During the programme, which students will complete alongside their Year 12 studies, successful applicants will be given the opportunity to take part in various enrichment activities. These include healthcare subject taster days and an A level revision boot camp. In addition, science academic tutoring and specialist UCAS and Work Experience preparation workshops help to prepare students for their applications to competitive healthcare courses.



During their time on the programme, students will be exposed to a range of leading experts from healthcare subjects taught at Aston University and hear from practising healthcare professionals from across the region, as well as meeting current Aston University healthcare students.

Learners will be expected to attend all compulsory Year 12 events to be eligible for a Pathway Contextual Offer if they apply to Aston University on our undergraduate Health and Life Sciences degrees.

Key Dates

Students must have support from their teachers or careers advisers to apply, including approval for time off school/college where necessary to attend events.

Autumn Term

- > Student and Parent Launch
- > Healthcare Taster Day

Spring Term

- > Revision Boot Camp
- > Optional Academic Tutoring in either Biology, Chemistry or Maths A Level
- > UCAS Application and Work Experience Preparation Day

Summer Term

- > Study Skills and Revision Techniques Module
- > Summer School (including programme graduation)

Who is eligible for the Wesleyan Pathway to Healthcare?

The Wesleyan Pathway to Healthcare is open to students entering Year 12 in September who have a genuine interest in pursuing a career in healthcare. Please note, this does not include Medicine. Students who are interested in applying to the Pathway to Healthcare programme must meet the academic and widening participation criteria to apply. Please see website for details.

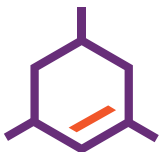
Why Choose the Wesleyan Pathway to Healthcare

- > Access to a wide range of healthcare experts to help you decide on your future career path.
- > A level boot camps, science academic tutoring and application preparation to ensure you are fully prepared to apply to university.
- > Help with making an informed decision about your future career choices.
- > A single point of contact at Aston University who will support you throughout the university application process and your time at school or college.
- > Eligible for a Pathway Contextual offer if your application to Aston University is successful



The Pathway to Healthcare Programme gave me the opportunity to flourish and realise my potential. It helped me develop my grades and social skills. It's an incredible opportunity that I would highly recommend"

Former Pathway to Healthcare student



The Royce Hornby Pathway to Engineering and Technology (STEM)



This programme has allowed me to experience everything Aston University has to offer, academically and otherwise.

Former Pathway to Engineering and Technology (STEM) student



Our Pathway to Engineering and Technology (STEM) is a programme that empowers Year 12 students who are considering a degree in Technology, Computer Science, Engineering, Maths and the Physical Sciences. Designed to expand knowledge and develop skills, this sustained programme of activity aims to raise students' aspirations, improve their motivation to progress onto Higher Education and provides them with the knowledge, skills and experiences that will enhance their UCAS application. Please note, this Pathway does not include Healthcare or Medicine.

During the programme, which students will complete alongside their Year 12 studies, successful applicants will be given the opportunity to take part in various enrichment activities. These include subject taster days, Science or Maths academic tutoring, and Industry Insight Days with key professional from within the sector to help students prepare for their future career choices. Students will also get the opportunity to meet current Aston University STEM students.

Learners will be expected to attend all compulsory Year 12 events to be eligible for a Pathway Contextual Offer if they apply to Aston University on our undergraduate Engineering and Physical Sciences degrees.

Key Dates

Students must have support from their teachers or careers advisers to apply, including approval for time off school/college where necessary to attend events.

Autumn Term

- > Student and Parent Launch
- > STEM Taster Days

Spring Term

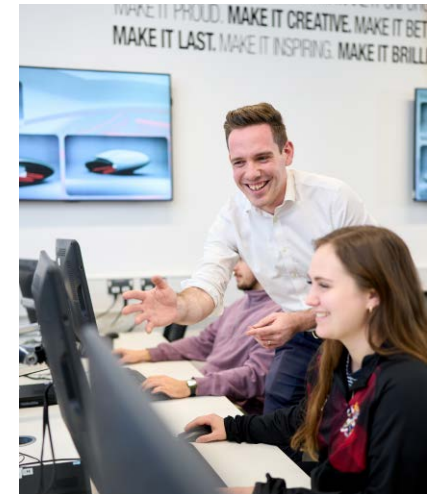
- > Revision Boot Camp
- > Optional Academic Tutoring in either Biology, Chemistry or Maths A Level
- > UCAS Application and Work Experience Preparation Day

Summer Term

- > Study Skills and Revision Techniques Module
- > Summer School (including programme graduation)

Who is eligible for The Royce Hornby Pathway to Engineering and Technology (STEM)?

The Pathway to Engineering and Technology (STEM) is open to students entering Year 12 in September who are considering a degree in Technology, Engineering and Maths and the Physical Sciences. Please note, this Pathway does not cover Medicine and Healthcare. Students who are interested in applying to the Pathway



to Engineering and Technology (STEM) programme must meet the academic and widening participation criteria to apply. Please see website for details.

Why Choose The Royce Hornby Pathway to Engineering and Technology (STEM)

- > Access to a wide range of STEM experts to help you decide on your future career path.
- > A level academic tutoring and application preparation to ensure you are fully prepared to apply to university.
- > Help with making an informed decision about your future career choices.
- > A single point of contact at Aston University who will support you throughout the university application process and your time at school or college.
- > Eligible for a Pathway Contextual offer if your application to Aston University is successful.

Frequently asked questions

Find the answers to some of the most commonly asked questions about Aston University's pathway programmes.

Q. How do students apply?

A. Applications for our next cohort on the Pathways to the Professions programme will open in August and will close early October. Full information and the application form can be found [here](#).

Q. Can students apply for more than one pathway programme?

A. Students can apply for more than one pathway, but they need to make sure they meet the eligibility criteria for each pathway they wish to apply to. Students can only take part in one pathway stream. We would encourage students to research which programme would suit them best as they all offer different experiences and often focus on different subjects and topics. Whichever programme students choose carries the same benefits for them in terms of being eligible for a reduced offer of study if they make a successful application to Aston University.

Q. Does being on a pathways programme mean students are guaranteed a contextual offer?

A. Being on a pathways programme does not guarantee students a contextual offer as they must still meet our admissions and entry criteria to gain a place on one of our degree courses. In addition to this, we may not be able to offer a reduction in entry requirements for students studying BTECs or other A level equivalents. For questions about Aston University's contextual offer, please get in touch with the Undergraduate Admissions Team by emailing ugadmissions@aston.ac.uk.

Q. Does being on a pathways programme mean students are guaranteed an interview if the course they want to study requires one?

A. Being on a pathways programme does not guarantee students will be invited for interview at Aston University. This is because students must still meet our admissions and entry criteria to gain a place on one of our degree courses and courses which require interviews are very competitive.



Q. Do students have to attend all events?

A. All events on our pathways programmes are compulsory apart from the academic tutoring in either Biology, Chemistry or Maths A-Level, which is optional. These dates will be shared with students well in advance. Students must attend all compulsory events in Year 12 to be eligible for a Pathway Contextual Offer if applying to Aston University.

Q. Do students have to apply through their school?

A. Applications for all of our pathway programmes are made by the student. However, students will be asked to provide the name and contact details of a member of staff from their school/college to verify their application. Students must also have the support of their school or college to attend any pathway events that occur during term time. These dates will be shared with you and your teachers well in advance.



Get in touch

For further information and to apply visit our [website](#) or contact us directly at outreach@aston.ac.uk

Don't forget to follow us on Twitter @AstonPathways for the latest information, top tips, and guidance to support your journey into Higher Education #TeamAston

Find out more

If you are interested in finding out more about the outreach events and activities which we run at Aston University, please visit our central Student Recruitment and Outreach webpages at www.aston.ac.uk/sro or contact us directly at sro@aston.ac.uk

The Pathway to Medicine and Pathway to Healthcare is delivered in partnership with Wesleyan, the specialist financial mutual for doctors, dentists, and teachers.

www.wesleyan.co.uk

WESLEYAN
we are all about you



Founded in 1895 and a
university since 1966

